

Kean University "Empowers Me!"

Kean University's Environmental Management by Portal Outreach for Weather Education and Research by Students with Media Experiences



by Paul J. Croft and Tom Giordano

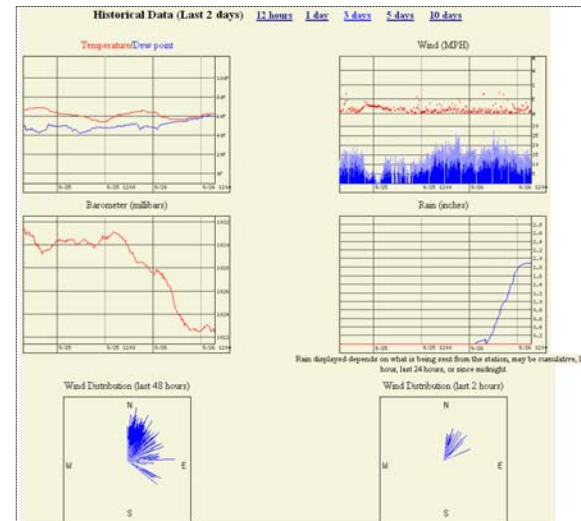


Establish System



Novice versus expert level provided

Accessibility



Graphs provide different formats of data that may be customized to user needs

Purpose

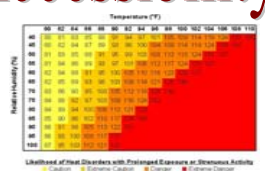
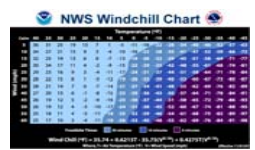
Provide weather & ecosystem monitoring, assessment, & prediction for integration & training.

Weather & Climate Portal use includes...

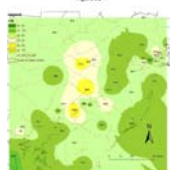
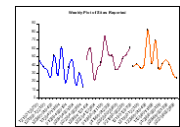
- Education – Teaching and training, and guides to data and products information.
- Awareness – Watches and warnings, safety weeks and other content for learning.
- Research – Platform for real-time and archive data; use of urban data sets for comparison with rural/suburban.

Web Products (and tabs) to be provided...

- Basic parameters and derived indices (e.g., T, P, wind; and wind chill, heat index, AQI, UV index)
- Climate information (both on campus and nearby locations from online sources)
- Media information (e.g., Keancast) and online resources (e.g., alert system, podcasts, psas)
- Research activities at Kean University and related projects by faculty, staff, and students



Research Studies



Acknowledgements – Department of Geology & Meteorology; Faculty & Staff, Students; Kean University Meteorology Program; Center for Earth Science Education (KU); College of Natural, Applied, and Health Sciences (KU); The Kean University Foundation; Office of Research & Sponsored Programs (KU), and the Institute for Urban Ecosystem Studies (KU).